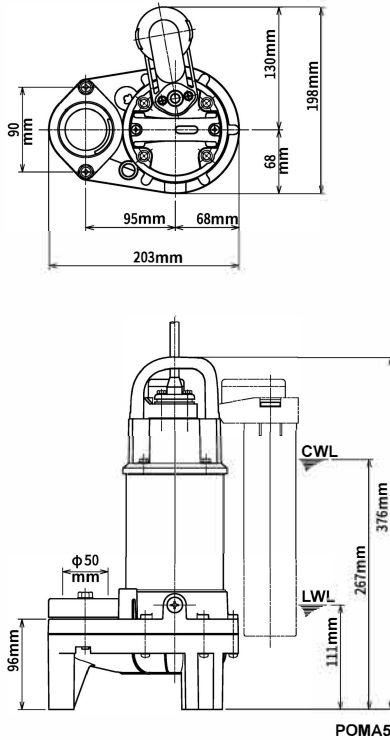
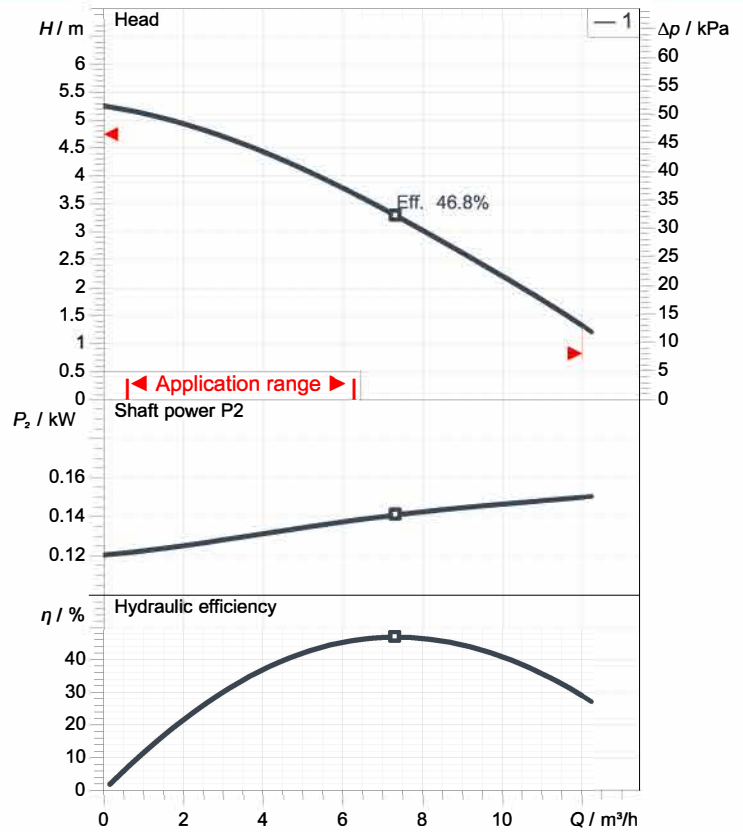


# Data sheet POMA5



CWL: Continuous running water level  
LWL: Lowest running water level



## Specification

Electric submersible pump POMA  
Degree of protection IP 68  
Pressure resistance max. 10 m  
Type of impeller Vortex impeller  
Free passage 35 mm  
Suitable for:  
sewage water, various waste water

## Electric motor

Dry-type submersible induction motor  
Insulation class E 2Poles 2852 1/min  
Starting mode  
Rated voltage 230 V 50 Hz 1~  
Power uptake 0.34 kW  
Rated power 0.15 kW  
Rated current 1.65 A  
Start current 3.2 A

## Cable

10m H07RN8-F 3Cx1mm<sup>2</sup>

## Motor Protection

Circle thermal protector  
(snap-action bi-metal device)

## Shaft seal

Double inside mechanical seal in oil bath

Primary seal  
Silicon carbide on silicon carbide  
Secondary seal  
Ceramic on carbon

## Bearings

Shielded ball bearings, maintenance-free

## Materials

Impeller	Plastic with glass fibers
Upper Pump casing	Plastic with glass fibers
Lower Pump casing	Plastic
Motor Frame	DIN 1.4301 (EN-X5CrNi 18-10)
Shaft	SUS316 (EN-X5CrNiMo17-12-2)

## Discharge size

2" (50mm) screwed-in mating flange

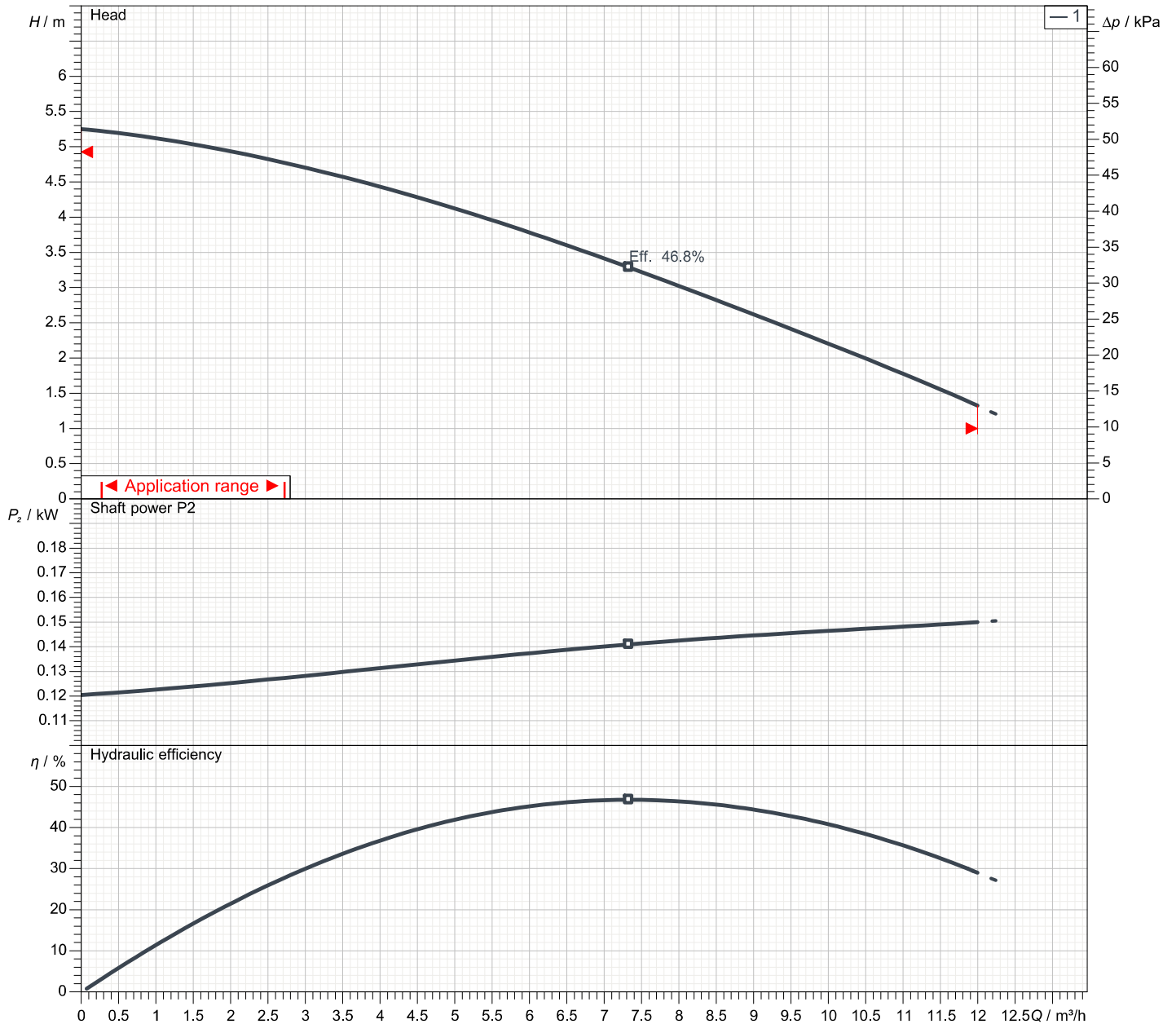
## Weight

5.5 kg (dry weight of the pump only without cable)

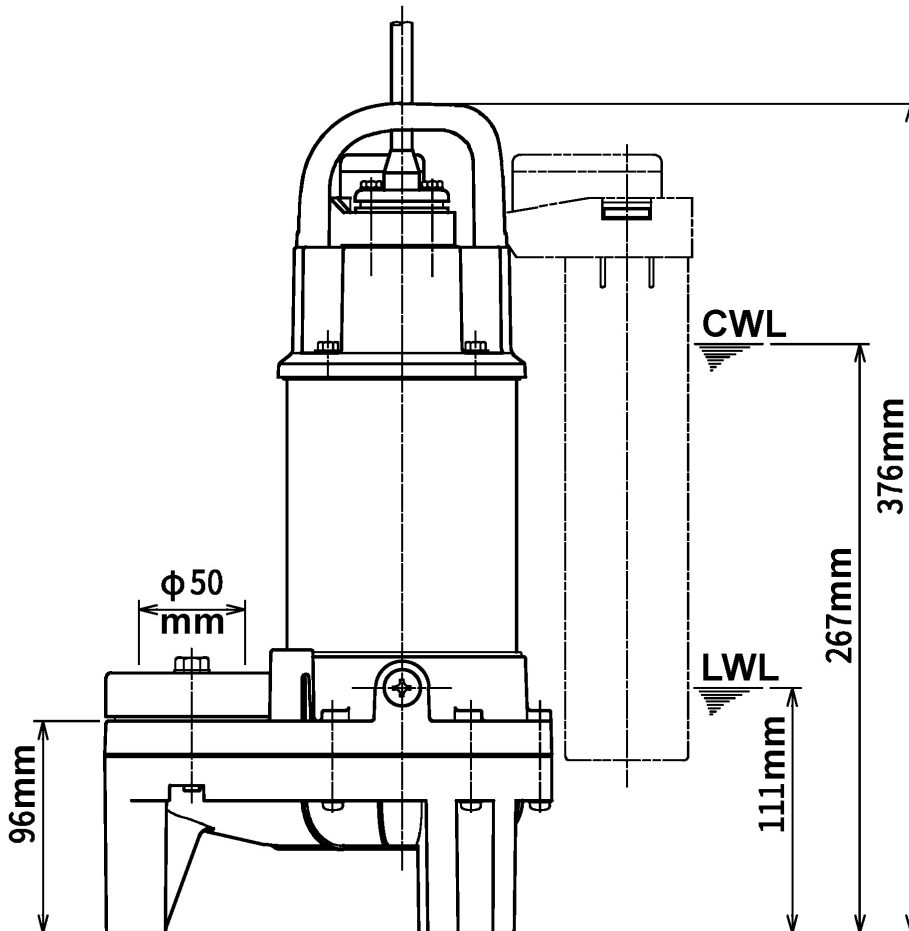
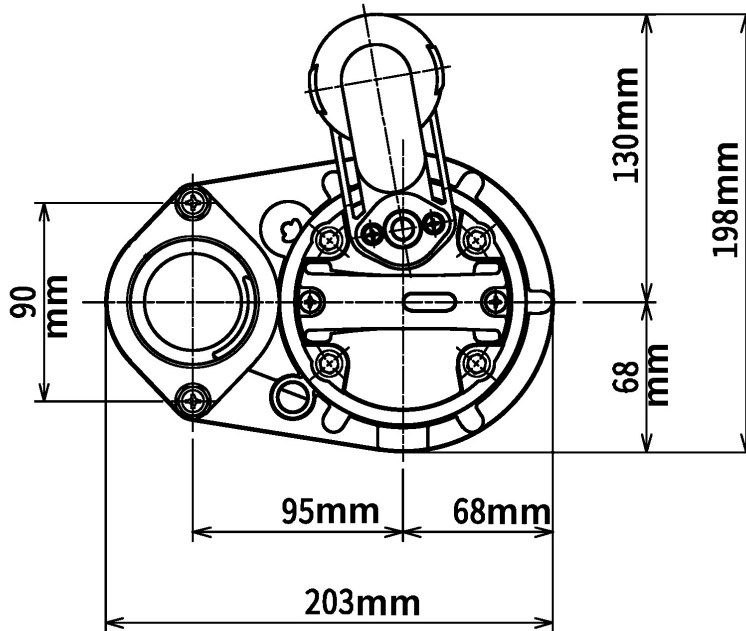
# Performance curve

## POMA5

Discharge port	2"
Head	5.3 m
Flow	12.0 m <sup>3</sup> /h
Rated power	0.15 kW
Power input	0.34 kW
Phases	1~
Voltages	230 V
Frequency	50 Hz
Rated current	1.65 A
Starting current	3.20 A
Number of poles	2
Speed	2852 1/min
Starting mode	
Insulation class	E



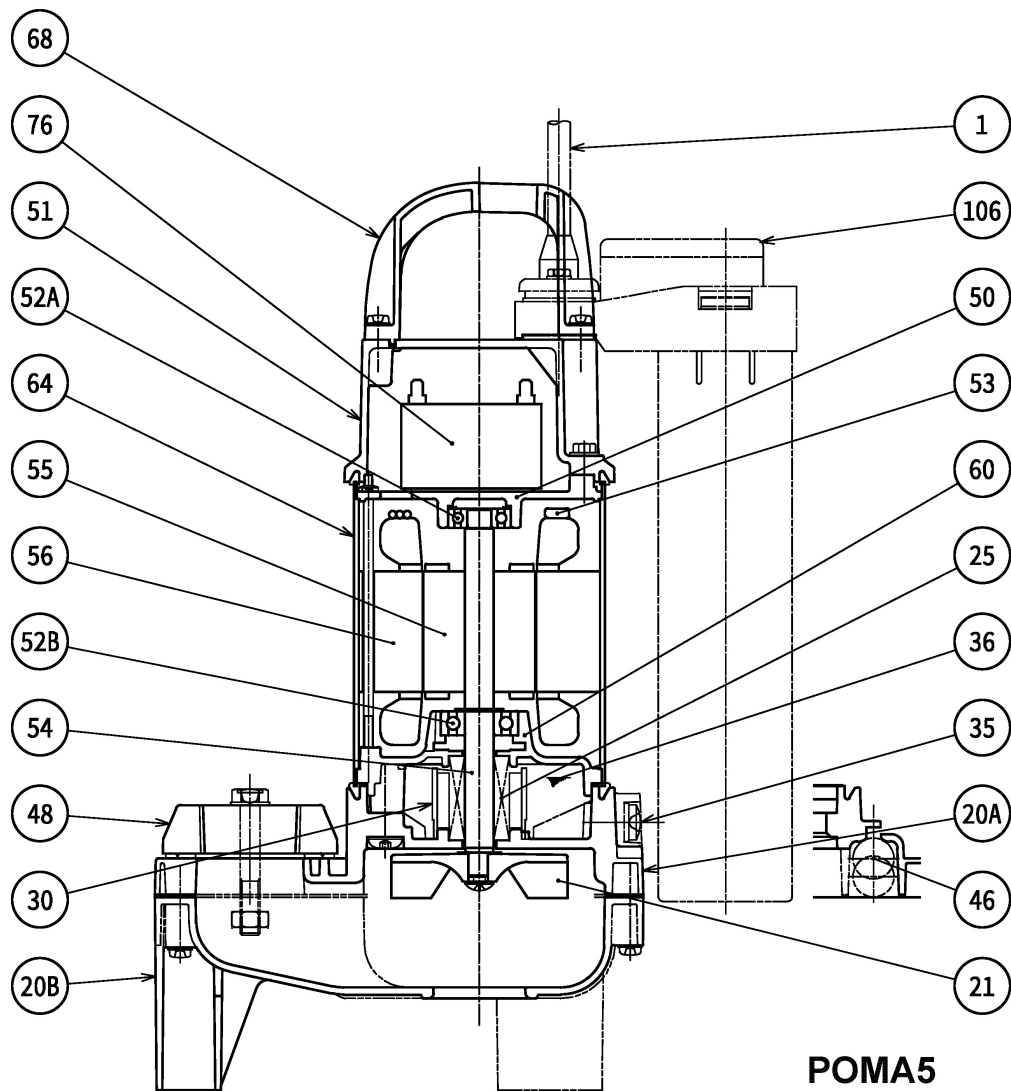
# Dimensions POMA5



**POMA5**

CWL: Continuous running water level  
LWL: Lowest running water level

# Sectional drawing POMA5



No.	Description	Remark	No.	Description	Remark
1	Cable	H07RN8-F	55	Rotor	.
20A	Upper Pump casing	Plastic with glass fibers	56	Stator	.
20B	Lower Pump casing	Plastic	60	Bearing Housing	Aluminium die casting
21	Impeller	Plastic with glass fibers	64	Motor Frame	DIN 1.4301 (EN-X5CrNi 18-10)
25	Mechanical seal	D-12RC	68	Handle	Plastic
30	Oil distributor	Plastic	76	Condenser	.
35	Oil screw	DIN 1.4301 (EN-X5CrNi 18-10)	106	Float	Plastic
36	Lubricant	Turbine oil (ISO VG32)			
46	Pressure release valve	Glass bead			
48	Screwed Flange	Plastic with glass fibers			
50	Motor cover	Aluminium die casting			
51	Main cover	Plastic + glass fibers			
52A	Upper bearing	6000ZZC3			
52B	Lower bearing	6201ZZC3			
53	Motor Protector	.			
54	Shaft	SUS316 (EN-X5CrNiMo17-12-2)			